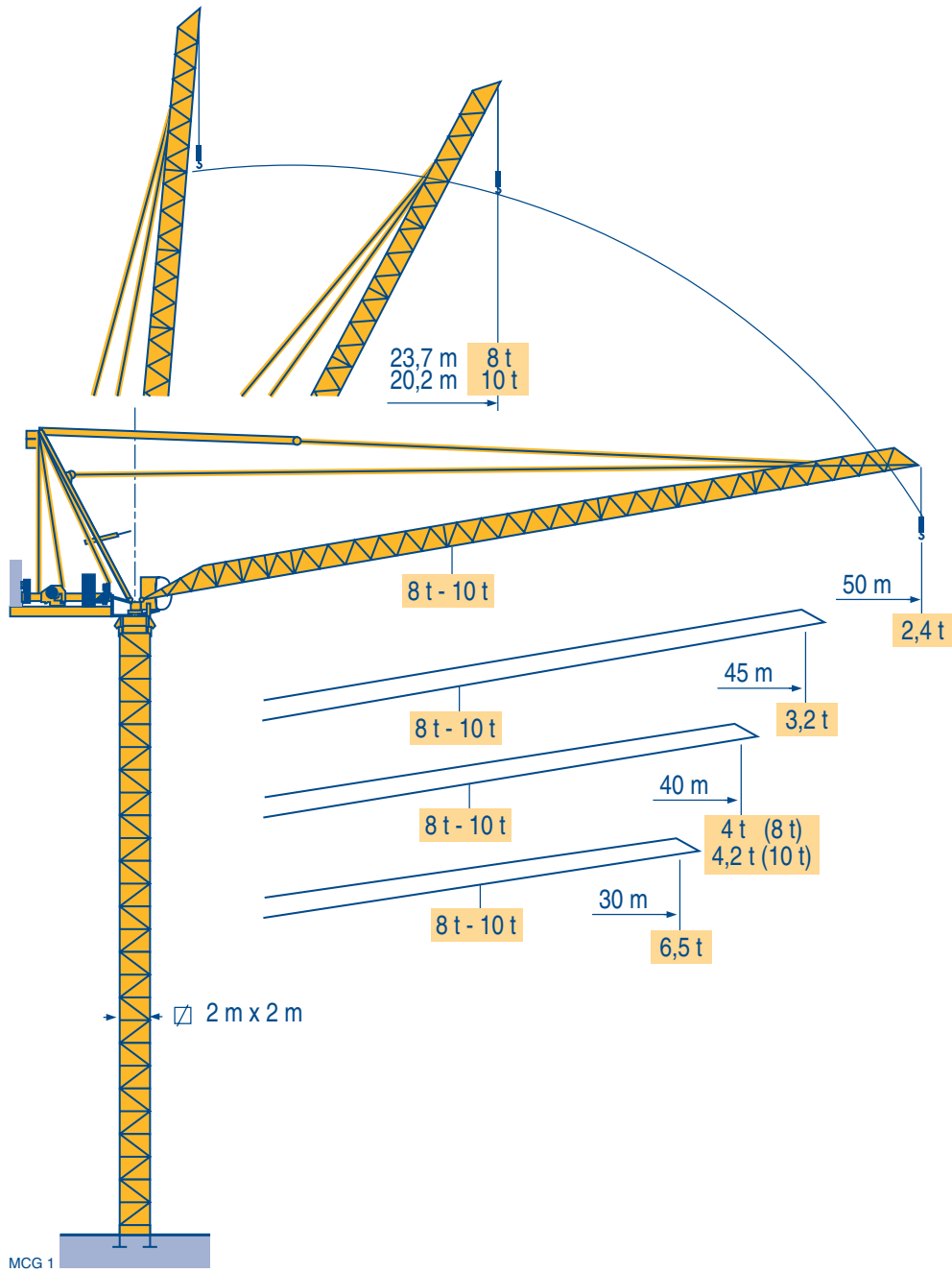


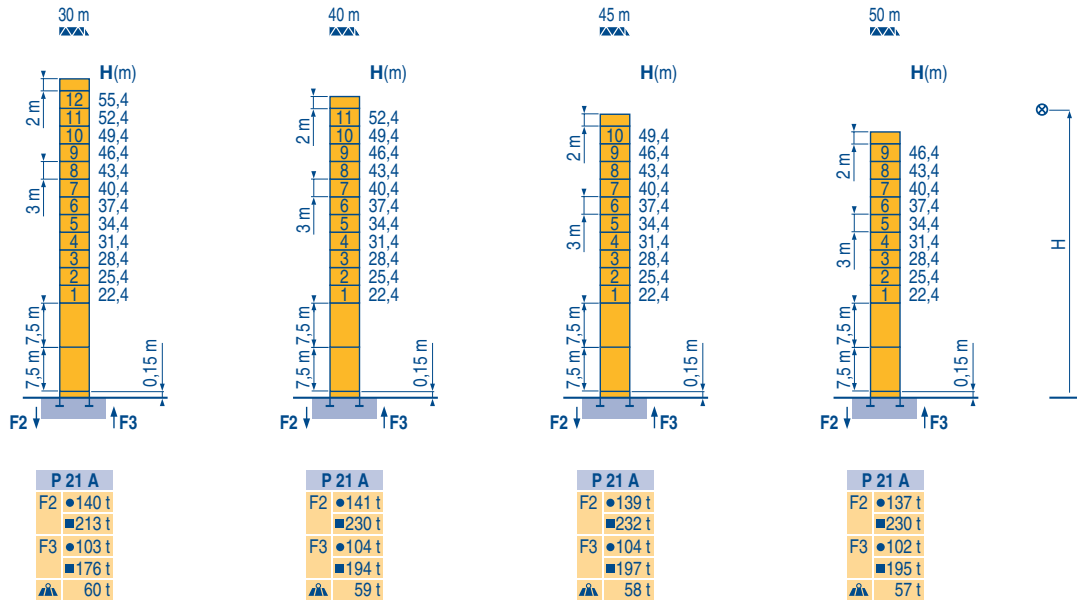
MR 160 B P21A



Masts / Reactions

Telescopic 2 m

MCG 1

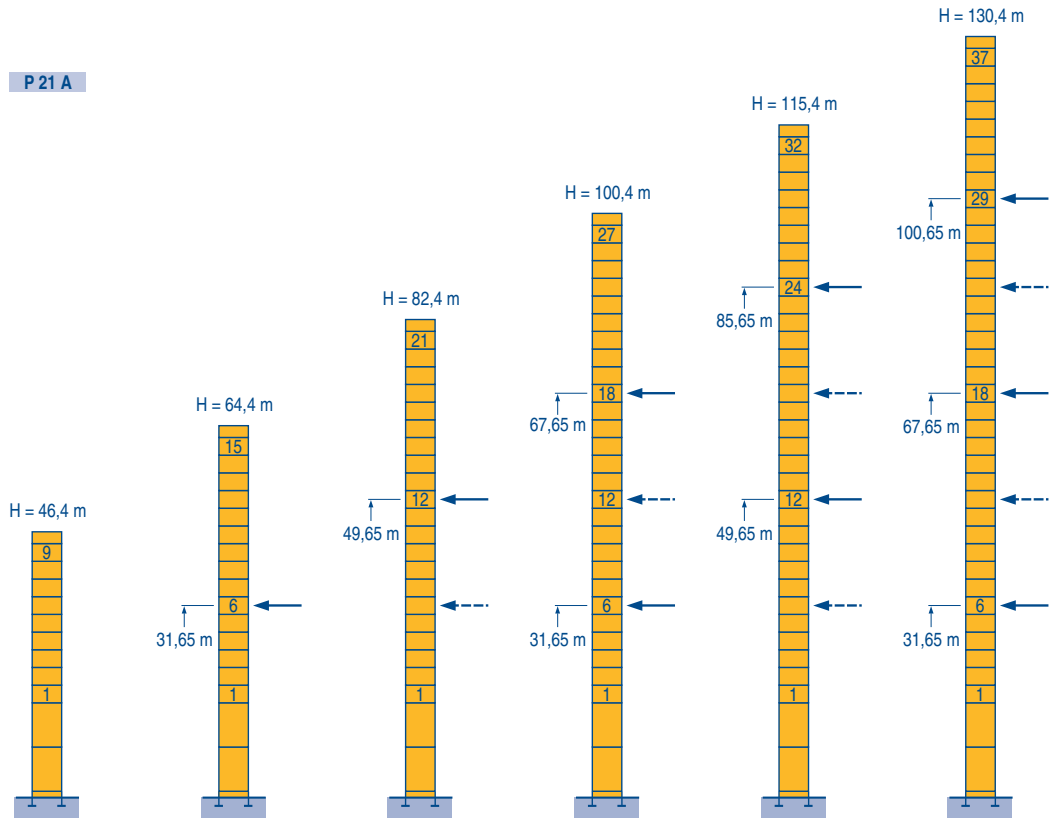


Anchorage

Jib = 50 m

P 21 A

MCG 1



MR 160 B P21A

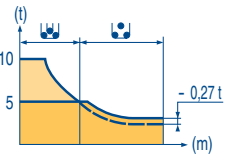
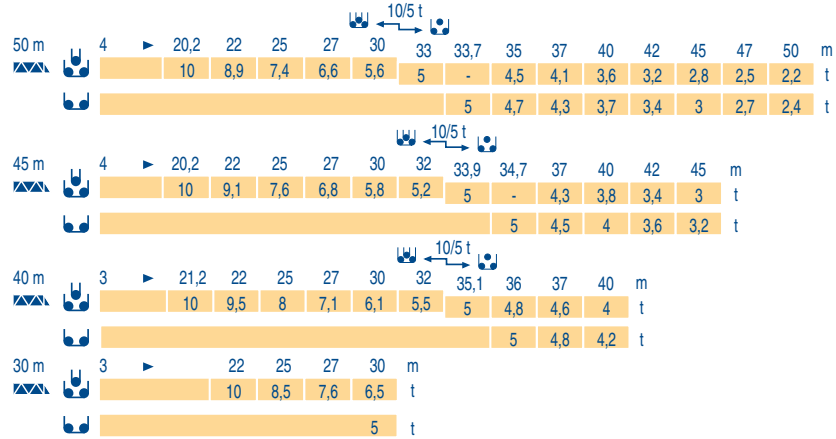
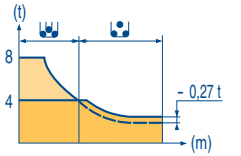
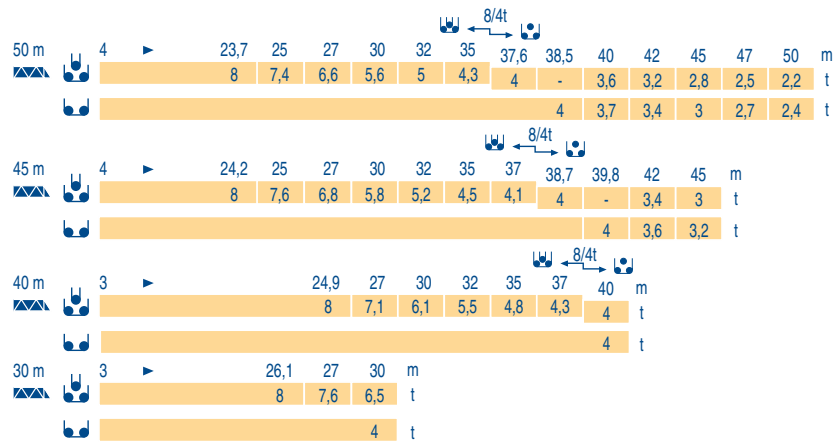


GB

- Reactions in service
- Reactions out of service
- ▲ Without load, ballast (or transport axles), with maximum jib and maximum height.

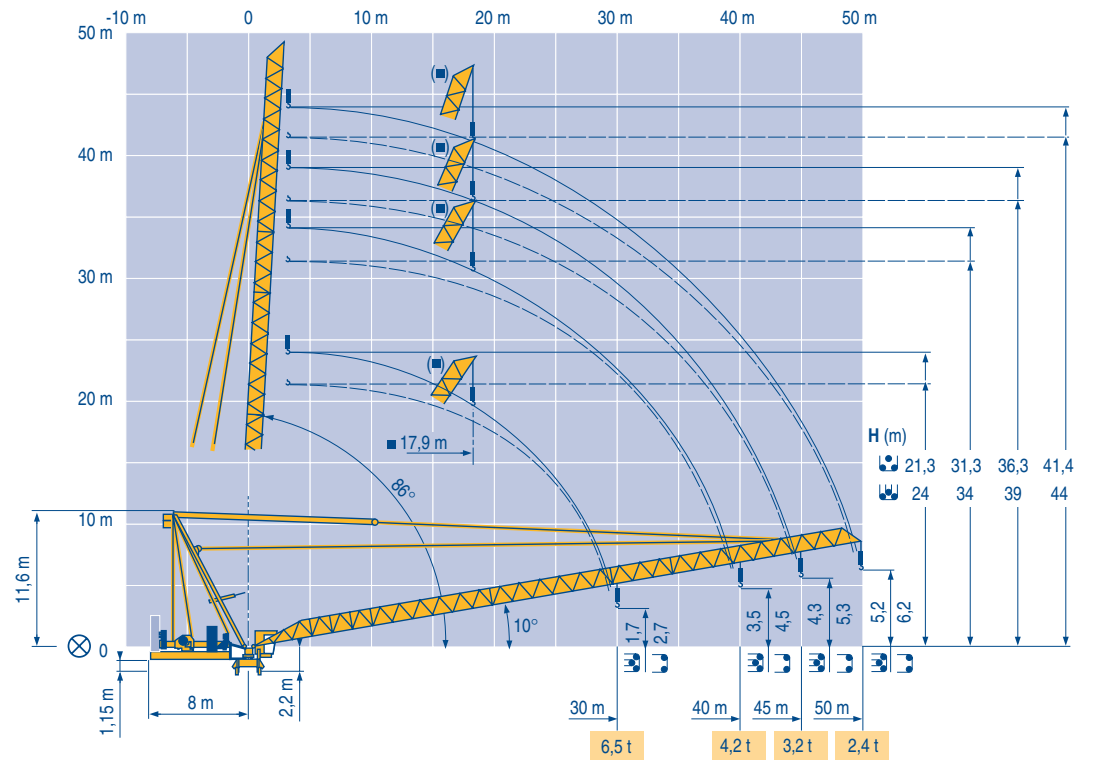
Load diagrams

MCG 1



Luffing jib

MCG 1



MR 160 B P21A

POTAIN®

GB









Jib hinge shaft

Weathervaning position

Mechanisms

MCG 1

MR 160 P21A 50 Hz			L		U		hp	kW	
55 RCS 20	m/min		0 → 52	0 → 104	0 → 26	0 → 52	55	40,5	566 m
	t		4	2	8	4			
50 LVF 25 Optima	m/min		3 → 12 → 36 → 46 → 66 → 88		1,5 → 6 → 18 → 23 → 33 → 44		50	37	557 m
	t		5 5 5 3,75 2,5 1,25		10 10 10 7,5 5 2,5				
75 VBR 30			2 min				75	55	
RCV 145	rpm		0 → 0,8				2 x 6	2 x 4,4	
CEI 38		IEC 38	kVA						
400 V (+6% -10%) 50 Hz			140 kVA		2000/14				

MR 160 P21A 60 Hz			L		U		hp	kW	
55 RCS 20	m/min		0 → 62	0 → 124	0 → 31	0 → 62	66	48	566 m
	t		4	2	8	4			
50 LVF 25 Optima	m/min		3 → 12 → 36 → 46 → 66 → 88		1,5 → 6 → 18 → 23 → 33 → 44		50	37	557 m
	t		5 5 5 3,75 2,5 1,25		10 10 10 7,5 5 2,5				
75 VBR 30			1 min 40 s				90	66	
RCV 145	rpm		0 → 0,96				2 x 7,2	2 x 5,3	
CEI 38		IEC 38	kVA						
480 V (+6% -10%) 60 Hz			170 kVA		2000/14				

MR 160 B P21A

GB



Hoisting



Luffing



Slewing



In compliance with the EEC Instructions on noise level



This commercial document is not legally binding.
For any technical information, please refer to the corresponding instructions.

Manitowoc
Crane CARE

Manitowoc
Crane Group



Americas

Tel: +1 920 683 6322
Tel: +1 717 597 8121

Europe - Middle East - Africa

Tel: +(33) 4 72 81 50 00
Tel: +(44) 191 565 6281

Asia - Pacific

Tel: +(65) 6861 7133
Fax: +(65) 6862 4142

www.manitowoccrane.com

Manitowoc Crane Group Asia Pte Ltd
Manitowoc Crane Group
26 Benoi Road
Singapore 629898

Tel: 65-6861 7133
Fax: (Admin/ Sales) : 65-6862 4040
Fax: (Service/ Parts) : 65-6862 4142
www.manitowoccrane.com

MR 160 B P21A

Réf. 2004 45 MCG 1

Copyright.Reproduction interdite © POTAIN 2004

Réalisation Sedoc