

TOPKIT MC 180

LJA 1

POTAIN 

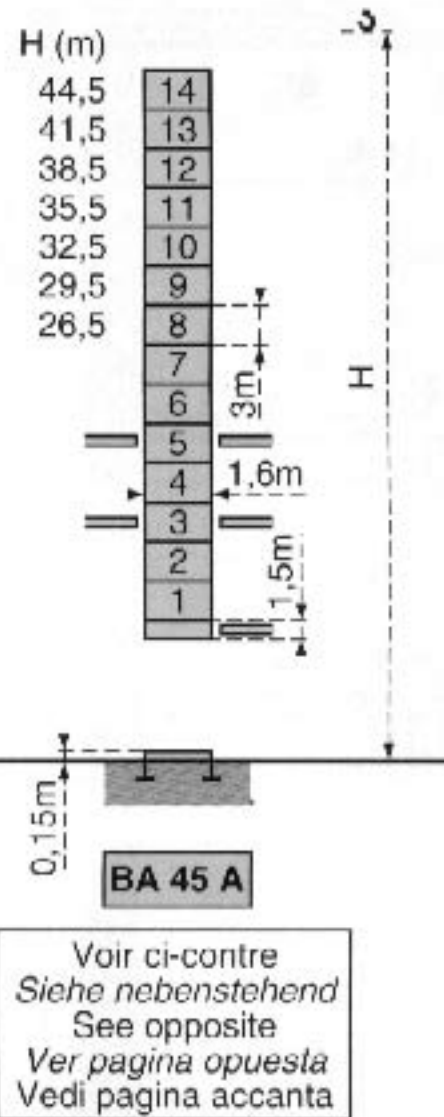
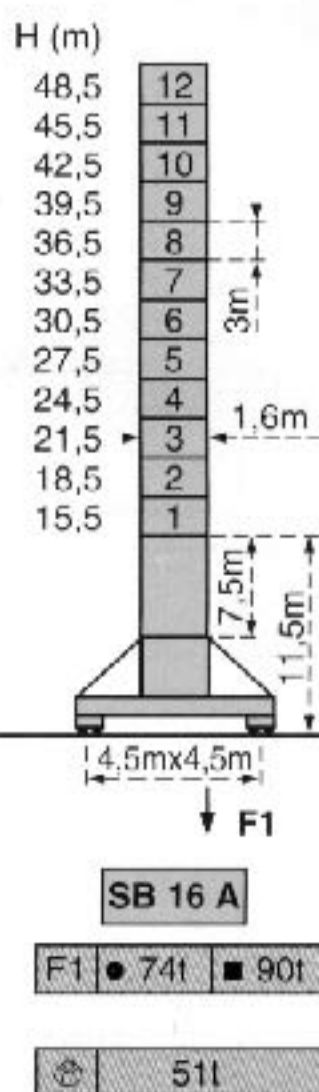
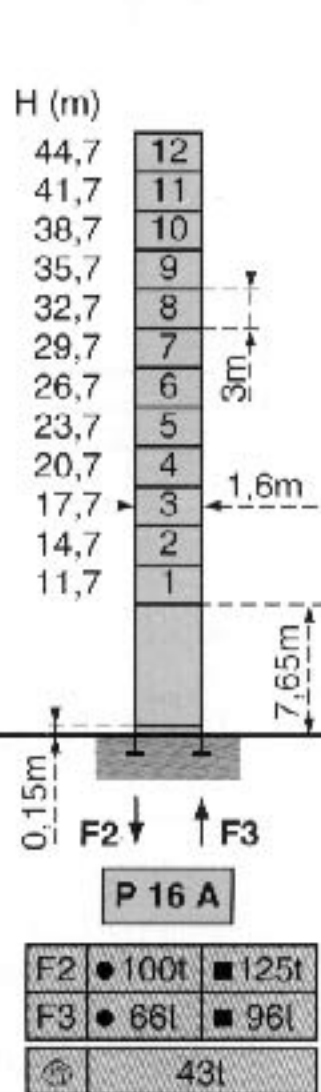


Mats - Maste - Masts - Mástil - Torre



∅ 1,6m

Flèche - Ausleger - Jib
Flecha - Braccio
40m → 55m

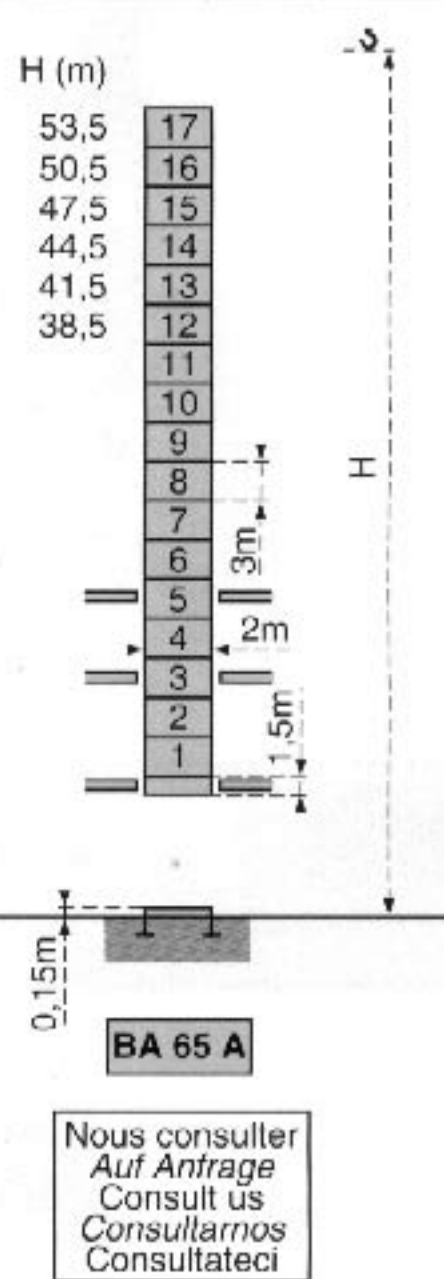
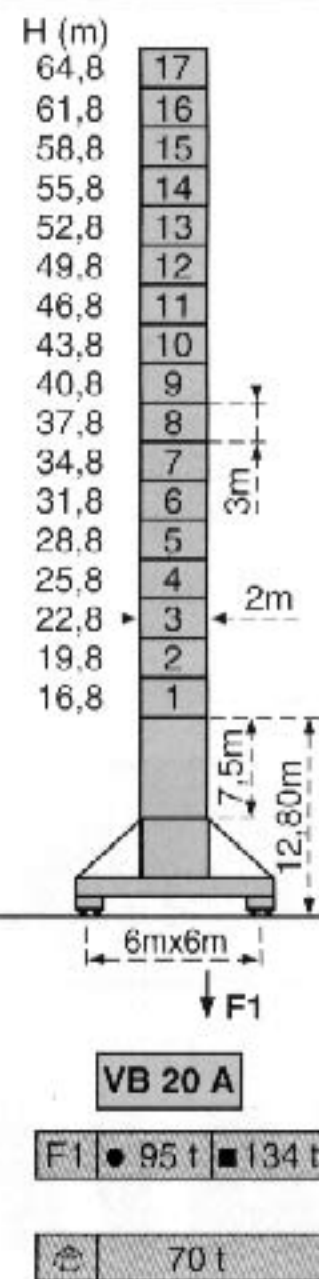
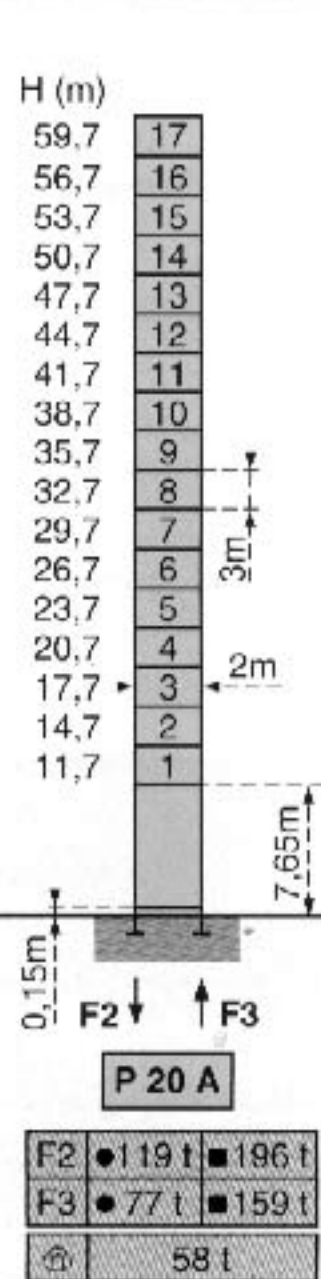


Mats - Maste - Masts - Mástil - Torre



∅ 2m

Flèche - Ausleger - Jib
Flecha - Braccio
40m → 60m

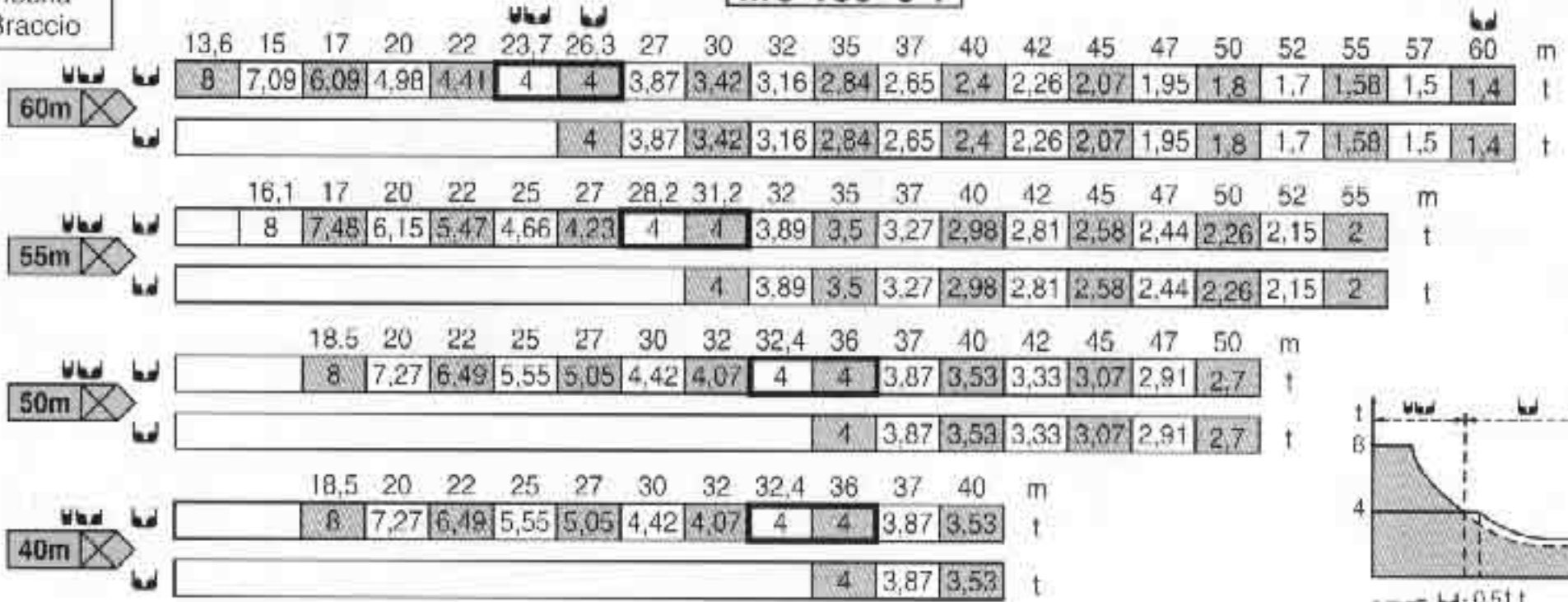


F = Réactions - Eckdrücke - Reactions - Reacciones - Reazioni

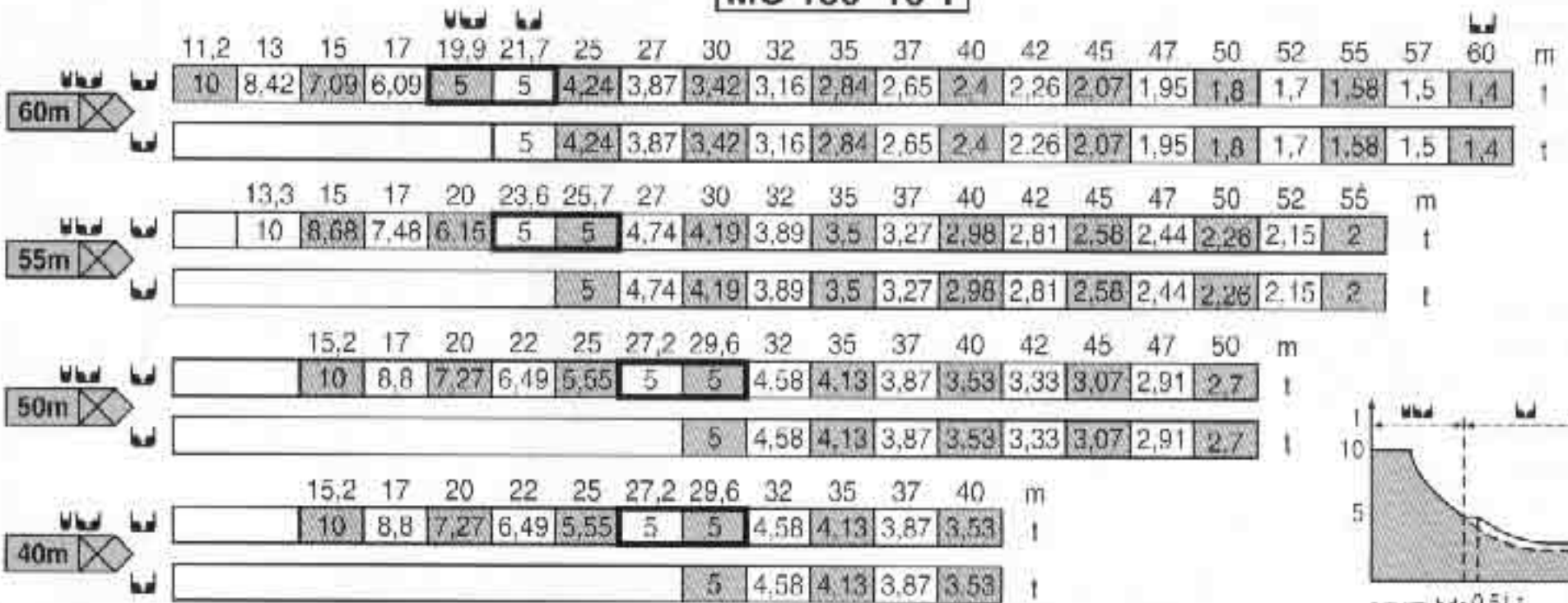
Flèche
Ausleger
Jib
Flecha
Braccio

Courbes de charges - Lastkurven - Load diagrams - Curvas de cargas - Curve di carico

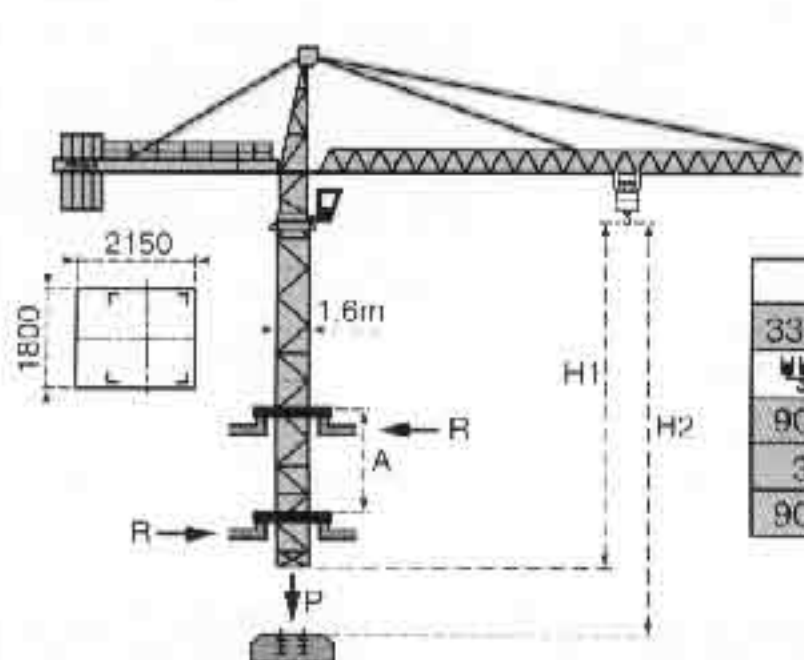
MC 180 8 T



MC 180 10 T



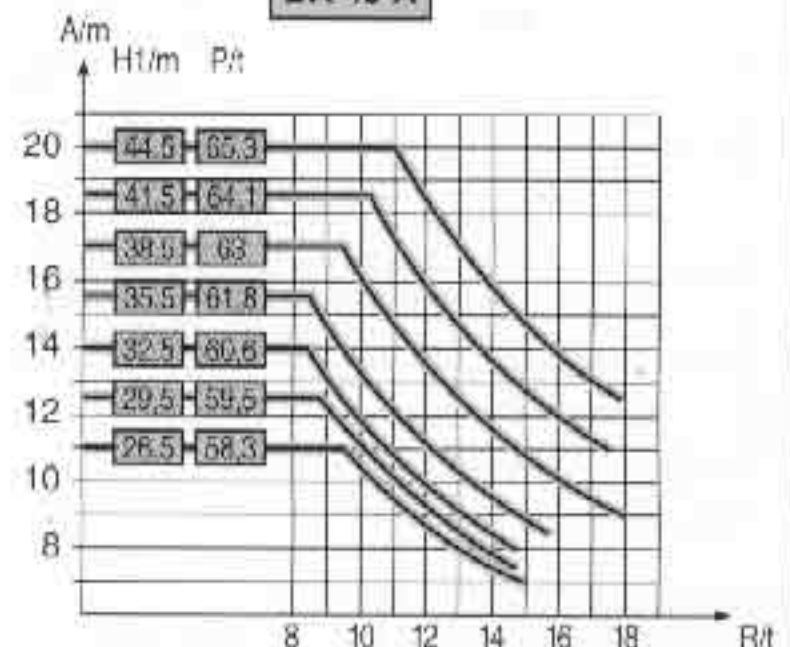
Télescopage sur dalles - Kletterkrane im Gebäude - Climbing crane Telescopage gruas trepadoras - Gru in cavedio



Mât de 2m : nous consulter
Mast von 2m : Auf Anfrage
2 m mast : consult us
Mástil de 2m : consúltanos
Torre 2m : consultateci

H2			
33 PC 20 -1	55 RCS 20D		
90m 180m	141m 283m		
33 PC 25	55 RCS 25/13		
90m 180m	140m 280m		


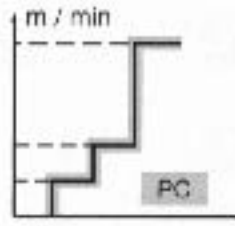



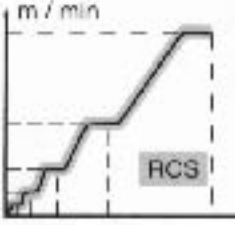

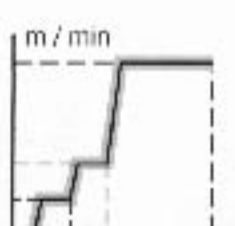
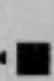
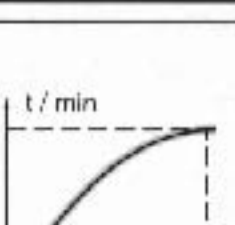

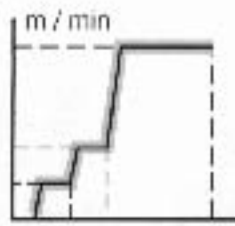
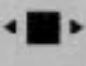
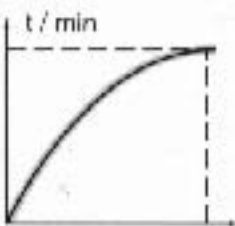


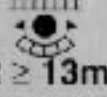
BA 45 A



A Distance entre cadres	A Abstand zwischen den Rahmen	A Distance between collars	A Distancia entre marcos	A Distanza fra i telai
H1 Hauteur grua	H1 Kranhöhe	H1 Crane height	H1 Altura grúa	H1 Altezza gru
P Poids de la grue (en service)	P Krangewicht (in Betrieb)	P Crane weight (in service)	P Peso de la grúa (en servicio)	P Peso della gru (in servizio)
R Réaction horizontale	R Horizontalkräfte	R Horizontal reaction	R Reaccion horizontal	R Reazione orizzontale

● En service	● In Betrieb	● In service	● En servicio	● In servizio
■ Hors service	■ Ausser Betrieb	■ Out of service	■ Fuera de servicio	■ Fuori servizio
⊕ A vide sans lest avec flèche et hauteur maximum.	⊕ Ohne Last und Ballast mit Maximalausleger und Maximalhöhe.	⊕ Without load and ballast with longest jib and maximum height.	⊕ Sin carga, sin lastre con flecha y altura máxima.	⊕ A vuoto senza zavorra e con braccio massimo e altezza massima.

Mécanismes - Antriebe - Mechanisms - Mecanismos - Meccanismi

			m/min	t	m/min	t		ch -PS hp	kW	
Levage Heben Hoisting Elevación Sollevamento		 8t	33 PC 20 - 1					360m >360m*	33	24
				4,6	4	2,3	8			
				28	4	14	8			
		 10t	55 RCS 20D	0 → 52	4	0 → 26	8	566m >566m*	55	40,5
				0 → 104	2	0 → 52	4			
				4,6	5	2,3	10			
	 10t	33 PC 25	23	5	11,5	10	360m >360m*	33	24	
			46	2,5	23	5				
			55	5	0 → 21	10				
	 10t	55 RCS 25/13	0 → 42	5	0 → 21	10	560m >560m*	55	40,5	
			0 → 84	2,6	0 → 42	5,2				
Distribution Katzfahren Trolleying Distribución Distribuzione			5 D3 V4 - 1		15-30-58			5	3,7	
Orientation Schwenken Slewing Orientación Rotazione			RCV 145		0 → 0,8 tr/min rpm			2x6	2x4,4	
Translation Kranfahren Travelling Traslación Traslazione	1,6 m	SB 16A  R ≥ 10m	RT 324		12,5 -25			2x7	2x5,2	
			TCV 449 ARC H ≤ 35,2m		10 - 50			4x6,8	4x5	
	2 m	VB 20A  R ≥ 13m	RT 544 A1 2V		13,5 - 27			4x7	4x5,2	
			TCV 649 ARC H ≤ 43,4m		10 - 50			4x6,8	4x5	
Réseau - Netzstrom - Mains supply - Red - Rete elettrica							CEI 38 IEC 38	400V(+6%-10%) 50 Hz		
Puissance électrique nécessaire - Anschlusswert - Necessary electric power Potencia eléctrica necesaria - Potenza elettrica necessaria								33 PC : 50 KVA 55 RCS : 80 KVA		
Groupe électrogène - Stromaggregat - Generator set - Grupo electrogeno - Gruppo elettrogeno								*		

*Nous consulter - Auf Anfrage - Consult us - Consultarnos - Consultateci

Conforme aux directives CEE 84/534 et 87/405 sur le niveau acoustique - Gemäss EWG-Richtlinien 84/534 und 87/405 für den Schall-Leistungspegel
 In compliance with the EEC 84/534 and 87/405 instructions on noise level - Conforme con las directivas CEE 84/534 y 87/405 sobre el nivel acustico
 Conforme alle direttive CEE 84/534 e 87/405 sul livello acustico



Copyright.Reproduction interdite © POTAIN 1995

POTAIN 

GRUPE LEGRIS INDUSTRIES

18.Rue de Charbonnières, B.P. 173-F 69132 ECULLY Cedex
 Tél. 72.20.20.20 - Télex 375 213 - Fax 72.20.20.00

POTAIN GmbH Deutschland Tel : 06.105.704.0
 POTAIN U.K. Great Britain Tel : 0895.44.52.61
 Simma POTAIN Italia Tel : 02.97.96.71
 POTAIN Portugal Portugal Tel : 02.968.08.89

TOPKIT MC 180

Réf. 1995.24 LJA 1