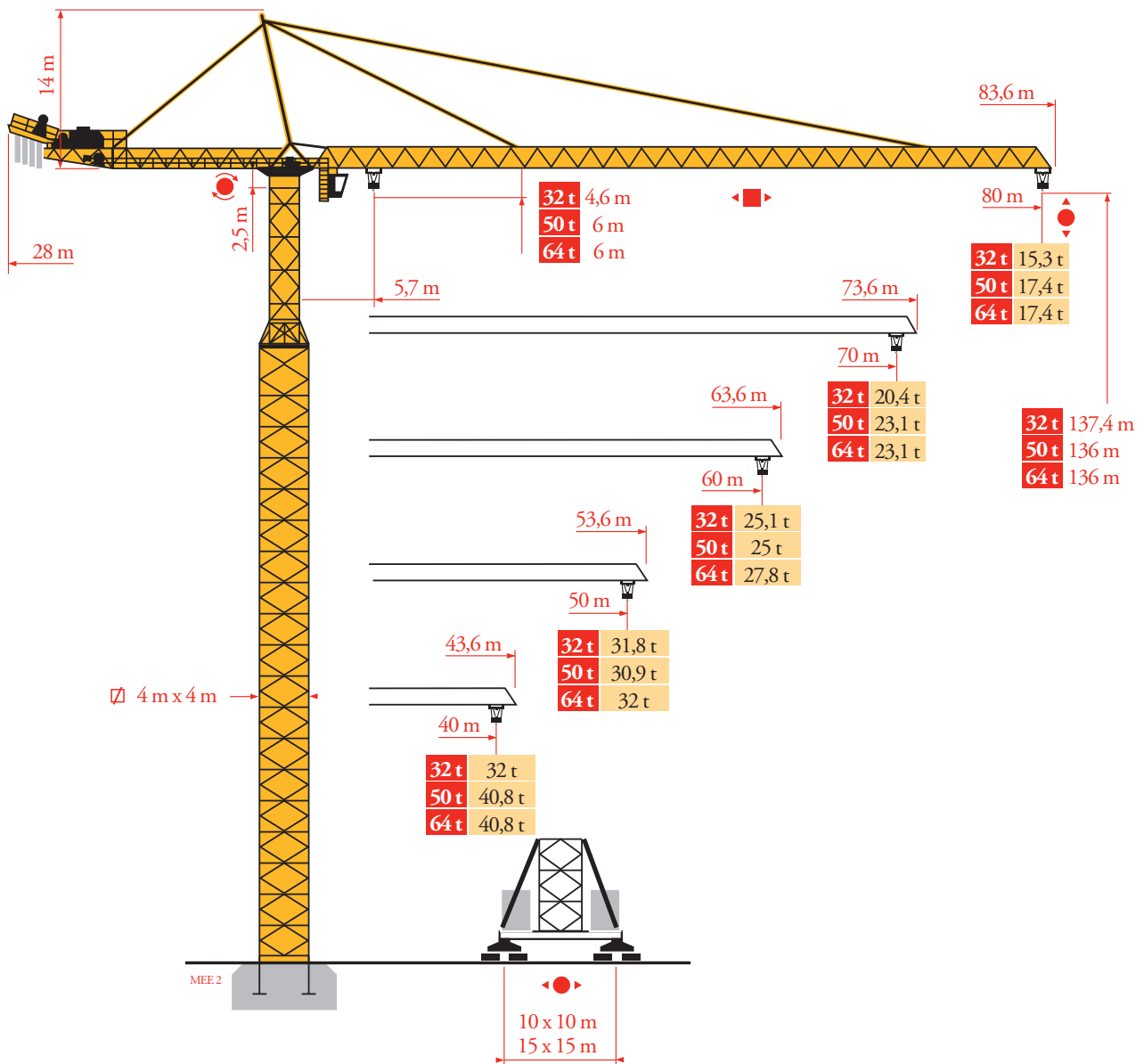


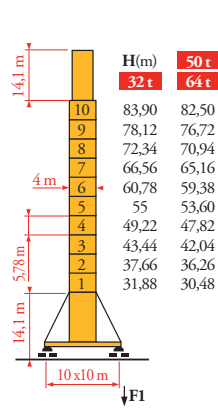
# Potain MD 1600



Mat / Réactions  
 Mast / Eckdrücke  
 Masts / Reactions  
 Mástil / Reacciones  
 Torre / Reazioni  
 Tramo / Reações  
 Композиции башни /  
 Реакции

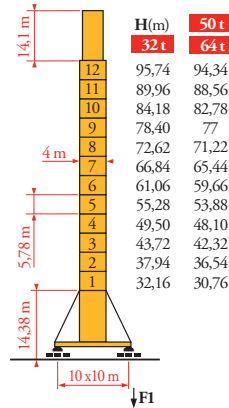
MEE 2

4 m x 4 m



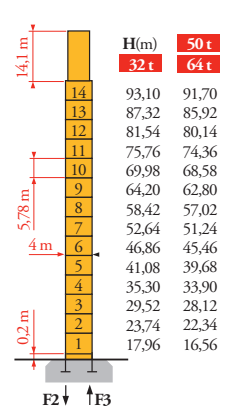
JA 950

F1	32 t	242 t	210 t
	50 t	246 t	210 t
	64 t	250 t	210 t



JB 950

F1	32 t	288 t	278 t
	50 t	292 t	278 t
	64 t	296 t	278 t

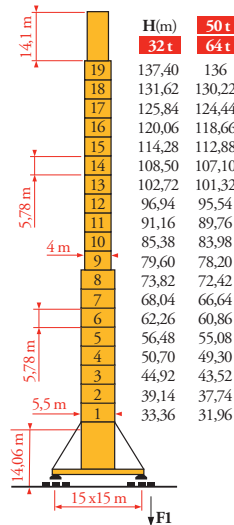


PA 950

F2	32 t	380 t	287 t
	50 t	384 t	287 t
	64 t	388 t	287 t

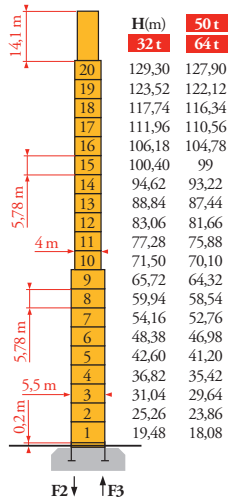
F3	32 t	206 t	129 t
	50 t	201 t	129 t
	64 t	198 t	129 t

4 m x 4 m  
 5,5 m x 5,5 m



KAm 1050

F1	32 t	292 t	395 t
	50 t	296 t	395 t
	64 t	300 t	395 t



PAm 1050

FR

- Réactions en service
- Réactions hors service
- 🏗️ A vide sans lest (ni train de transport) avec flèche et hauteur maximum

DE

- Reaktionskräfte in Betrieb
- Reaktionskräfte außer Betrieb
- 🏗️ Ohne Last, Ballast (und Transportachse), mit Maximalausleger und Maximalhöhe

EN

- Reactions in service
- Reactions out of service
- 🏗️ Without load, ballast (or transport axles), with maximum jib and maximum height

ES

- Reacciones en servicio
- Reacciones fuera de servicio
- 🏗️ Sin carga, sin lastre, (ni tren de transporte), flecha y altura máxima

IT

- Reazioni in servizio
- Reazioni fuori servizio
- 🏗️ A vuoto, senza zavorra (ne assali di trasporto) con braccio massimo e altezza massima

PT

- Reações em serviço
- Reações fora de serviço
- 🏗️ Sem carga (nem trem de transporte)-sem lastro com lança e altura máximas

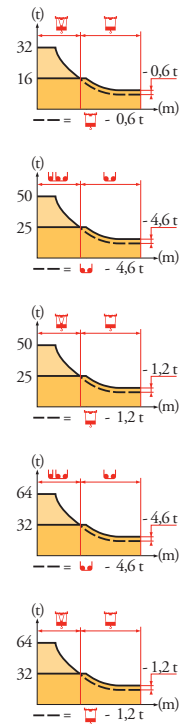
RU

- Реакции при работе
- Реакции в покое
- 🏗️ Вес без груза, балласта (или транспортных осей), с максимальной длиной стрелы и максимальной высотой

Courbes de charges  
Lastkurven  
Load diagrams  
Curvas de cargas  
Curve di carico  
Curva de cargas  
Диаграммы  
грузоподъемностей

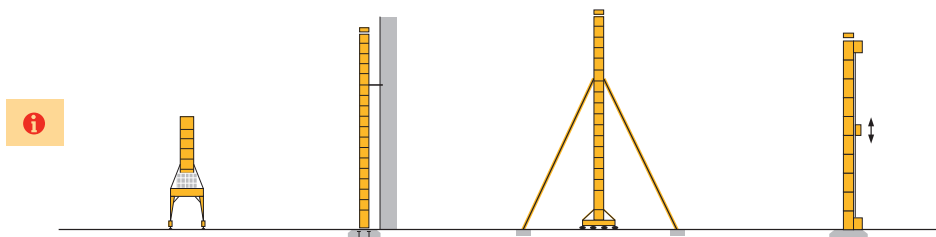
MEE2

80 m 32 t		5,7 ▶					45,4	50	55	60	65	70	75	75,7	77,7	80	m
							32	28,3	25	22,3	19,9	17,9	16,2	16	16	15,3	t
40/50/60/70 m		5,7 ▶					49,7	50	55	60	65	70					m
							32	31,8	28,1	25,1	22,6	20,4					t
80 m 50 t		5,7 ▶	30,3	35	40	45	50	52	59,9	65	70	75	80				m
			50	42	35,5	30,5	26,4	25	25	22,6	20,6	18,9	17,4				t
40/50/60/70 m		5,7 ▶															m
			33,2	35	40	45	50	55	57	60	65,6	70					t
			50	46,9	39,8	34,3	29,9	26,3	25	25	25	23,1					t
80 m 50 t		5,7 ▶	30,8	35	40	45	50	53,6	55,6	60	65	70	75	80			m
			50	43	36,5	31,5	27,4	25	25	22,6	20,3	18,3	16,5	15			t
40/50/60/70 m		5,7 ▶															m
			33,8	35	40	45	50	55	58,7	60	60,8	65	70				t
			50	47,9	40,8	35,3	30,9	27,3	25	25	25	22,9	20,7				t
80 m 64 t		5,7 ▶	24,6	25	30	35	40	43,3	48,7	50	55	60	65	70	75	80	m
			64	62,7	50,6	42	35,5	32	32	31	27,7	25	22,6	20,6	18,9	17,4	t
40/50/60/70 m		5,7 ▶															m
			26,9	30	35	40	45	47,5	50	53,3	55	60	65	70			t
			64	56,3	46,9	39,8	34,3	32	32	32	30,8	27,8	25,3	23,1			t
80 m 64 t		5,7 ▶	24,9	25	30	35	40	44,4	45,7	50	55	60	65	70	75	80	m
			64	63,7	51,6	43	36,5	32	32	28,6	25,3	22,6	20,3	18,3	16,5	15	t
40/50/60/70 m		5,7 ▶															m
			27,3	30	35	40	45	48,6	50	55	60	65	70				t
			64	57,4	47,9	40,8	35,3	32	32	28,5	25,5	22,9	20,7				t







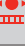
Autres implantations  
Aufstellmöglichkeiten  
Mounting possibilities  
Otras implantaciones  
Altre postazioni  
Outras implantações  
Возможности установки

MEE2



Mécanismes  
Antriebe  
Mechanisms  
Mecanismos  
Meccanismi  
Mecanismos  
Механизмы

MEE 3

i			U					UU					ch-PS hp	kW	
	32 t	250 LCC 80	m/min	46 → 68 → 86 → 108 → 122	23 → 34 → 43 → 54 → 61	250	180	620 m							
			t	16 12 8 4 2	32 24 16 6 4										
	50 t	250 LCC 125	m/min	30 → 44 → 56 → 72 → 80	15 → 22 → 28 → 36 → 40	250	180	690 m							
			t	25 18,8 12,5 6,2 3,1	50 37,5 25 12,5 6,25										
	64 t	250 LCC 160	m/min	24 → 34 → 44 → 56 → 62	12 → 17 → 22 → 28 → 31	250	180	440 m							
			t	32 24 16 8 4	64 48 32 16 8										
	32 t	15 DVF 16	m/min	0 → 33 (32 t) - 0 → 50 (16 t) - 0 → 67 (8 t) - 0 → 100 (2 t)					15	11					
	50 t	25 DVF 25	m/min	0 → 33 (50 t) - 0 → 66 (25 t) - 0 → 80 (12,5 t)					25	18					
	64 t	25 DVF 33	m/min	0 25 (64 t) - 0 → 50 (32 t)					25	18					
	RVF		tr/min U/min rpm	0 → 0,6					4 x 15	4 x 11					
			m/min	0 → 16					16 x 4	16 x 3					
			m/min	8,5 - 17					12 x 5	12 x 3,7					
IEC 60204-32												kVA			
400 V(+10% -10%) 50 Hz / 480 V(+ 6% -10%) 60 Hz												250 LCC : 340 kVA			



FR

Leverage  
Distribution  
Orientation  
Translation

DE

Heben  
Katzfahren  
Schwenken  
Kranfahren

EN

Hoisting  
Trolleying  
Slewing  
Travelling

ES

Elevación  
Distribución  
Orientación  
Traslación

IT

Sollevamento  
Distribuzione  
Rotazione  
Traslazione

PT

Elevação  
Distribuição  
Rotação  
Translação

RU

Подъем  
Перемещение каретки  
Поворот  
Перемещение крана



Document commercial non contractuel. Pour toute information technique se référer à la notice correspondante.

Unverbindliches Vertriebsdokument. Für technische Informationen, siehe die entsprechenden Anweisungen.

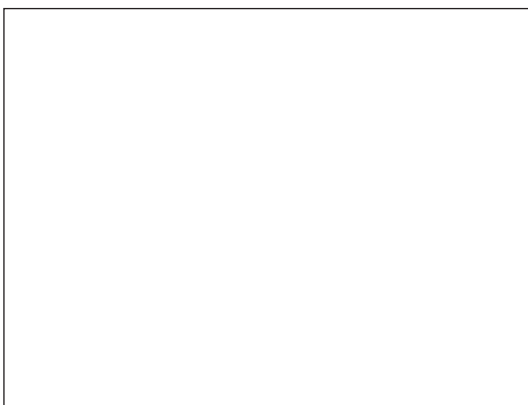
This commercial document is not legally binding. For any technical information, please refer to the corresponding instructions.

Documento comercial no contractual. Para cualquier información técnica, ver la noticia correspondiente.

Documento commerciale non vincolante, per tutte le informazioni tecniche fare riferimento al catalogo istruzioni.

Documento comercial não contratual. Para qualquer informação técnica complementar consultar as respectivas instruções.

Этот коммерческий документ не является юридически обязательным. Для получения технической информации, см. соответствующие инструкции.



MD 1600



**Manitowoc - Americas - World Headquarters**  
2400 S. 44th Street • Manitowoc • WI 54220 USA  
Tel: +1 920 684 4410 • Fax: +1 920 652 9778

**Manitowoc - Europe, Middle East & Africa**  
Ecully, France  
18, rue de Charbonnières B.P. 173 • 69132 ECULLY Cedex • FRANCE  
Tel: +33 (0)4 72 18 20 20 • Fax: +33 (0)4 72 18 20 00

**Manitowoc - Asia Pacific**  
16F Xu Hui Yuan Building,  
1089 Zhongshan No.2 Road (S) • Shanghai 200030 China  
Tel: +86 21 6457 0066 • Fax: +86 21 6457 4955

REF. 200642 MEE 3