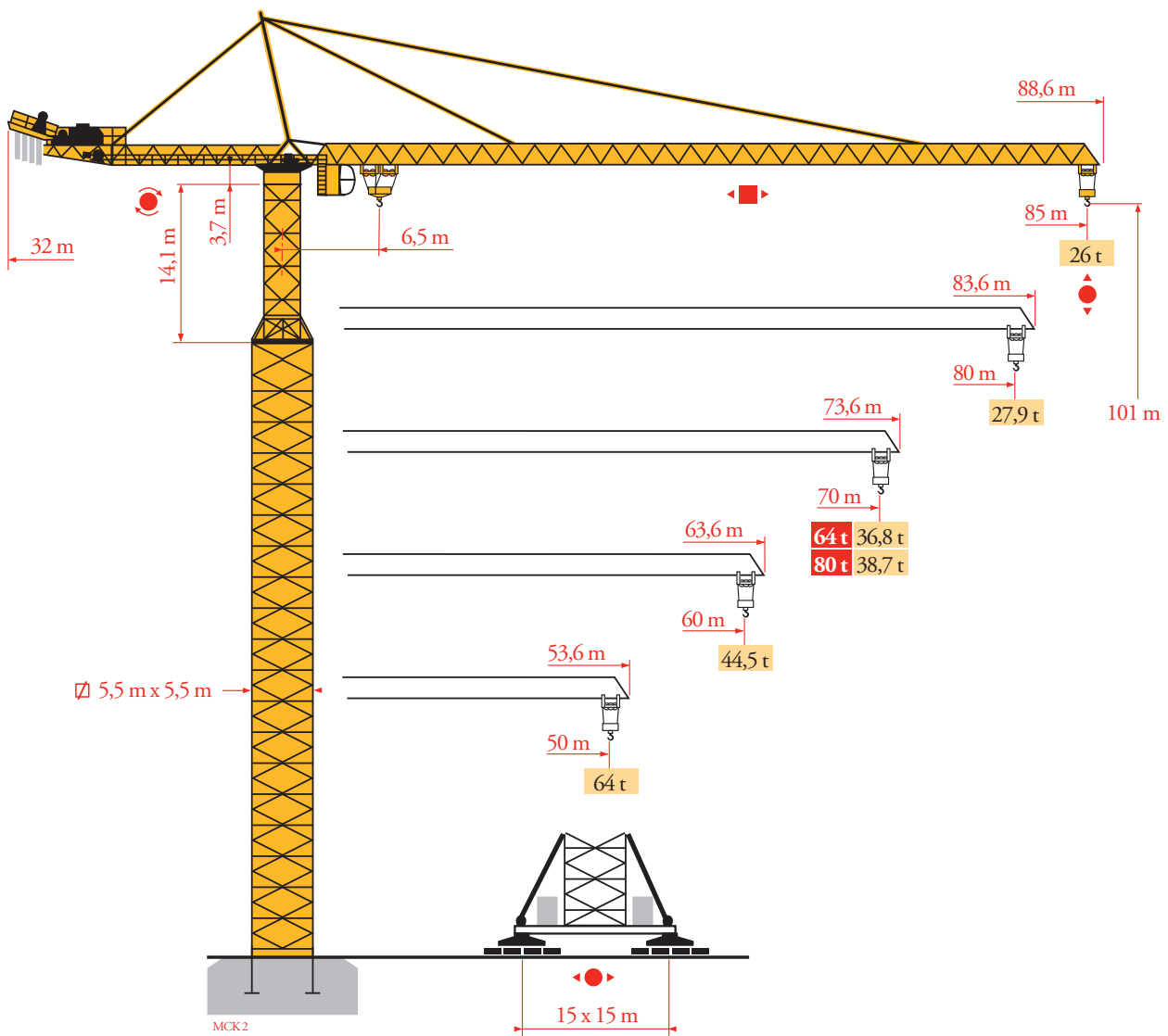


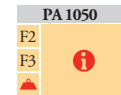
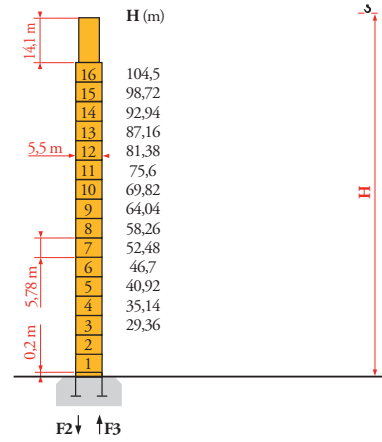
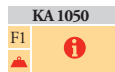
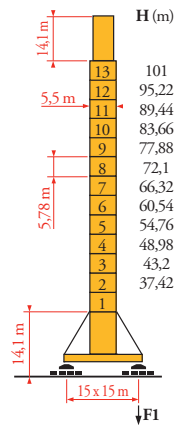
Potain MD 3200



Mat / Réactions
 Maste / Eckdrücke
 Masts / Reactions
 Mástil / Reacciones
 Torre / Reazioni
 Tramo / Reações
 Композиции башни /
 Реакции

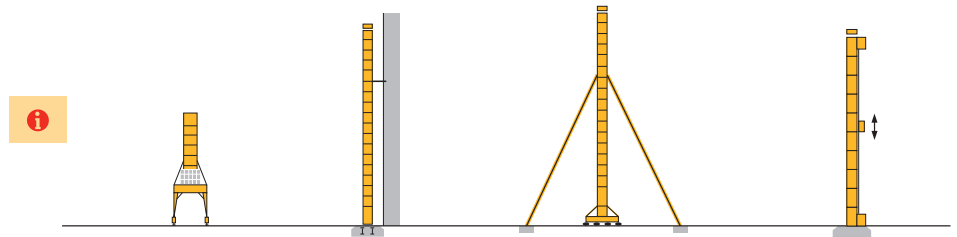
MCK3

5,5 m x 5,5 m



Autres implantations
 Aufstellmöglichkeiten
 Mounting possibilities
 Otras implantaciones
 Altre postazioni
 Outras implantações
 Возможности установки

MCK3



FR

- Réactions en service
- Réactions hors service
- A vide sans lest (ni train de transport) avec flèche et hauteur maximum
- Nous consulter

DE

- Reaktionskräfte in Betrieb
- Reaktionskräfte außer Betrieb
- Ohne Last, Ballast (und Transportachse), mit Maximalausleger und Maximalhöhe
- Auf Anfrage

EN

- Reactions in service
- Reactions out of service
- Without load, ballast (or transport axles), with maximum jib and maximum height
- Consult us

ES

- Reacciones en servicio
- Reacciones fuera de servicio
- Sin carga, sin lastre, (ni tren de transporte), flecha y altura máxima
- Consultarnos

IT

- Reazioni in servizio
- Reazioni fuori servizio
- A vuoto, senza zavorra (ne assali di trasporto) con braccio massimo e altezza massima
- Consultateci

PT

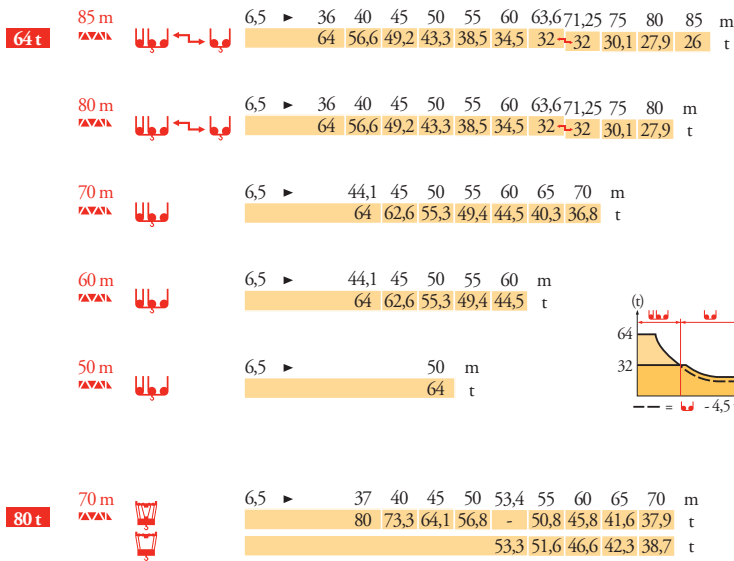
- Reações em serviço
- Reações fora de serviço
- Sem carga (nem trem de transporte)- sem lastro com lança e altura máximas
- Consultar-nos

RU

- Реакции при работе
- Реакции в покое
- Вес без груза, балласта (или транспортных осей), с максимальной длиной стрелы и максимальной высотой
- Проконсультируйтесь у нас

Courbes de charges
 Lastkurven
 Load diagrams
 Curvas de cargas
 Curve di carico
 Curva de cargas
 Диаграммы
 грузоподъемностей

МКК3



Mécanismes
 Antriebe
 Mechanisms
 Mecanismos
 Meccanismi
 Mecanismos
 Механизмы

МКК5

64 t						ch - PS	kW		
500 LCC 160	m/min	60 → 82 → 120			30 → 41 → 60	500	370	610 m	
	t	32 21 5,4			64 42 10,8				
800 LCC 160	m/min	92 → 126 → 160			46 → 63 → 80	785	560	610 m	
	t	32 21 5,4			64 42 10,8				
25 DVF 33	m/min	0 → 25 (64 t) - 0 → 50 (32 t)				25	18,5		
RVF	t/min U/min rpm	0 → 0,6				6x25	6x18		
80 t						ch - PS	kW		
250 LCC 133	m/min	15 → 18 → 22,5 → 30			10 → 12 → 15 → 20	250	180	610 m	
	t	53,3 39,8 26,5 13,3			80 60 40 20				
25 DVF 33	m/min	0 → 50				25	18,5		
RVF	t/min U/min rpm	0 → 0,6				6x15	6x11		
100 t - 120 t - 160 t		i							
KA 1050	RIVF	m/min	0 → 17				16x7	16x5,2	
IEC 60204-32		kVA							
400 V(+10% -10%) 50 Hz / 480 V(+ 6% -10%) 60 Hz		250 LCC : 315 kVA 500 LCC : 515 kVA 800 LCC : 800 kVA							

FR	DE	EN	ES	IT	PT	RU
Levage	Heben	Hoisting	Elevación	Sollevarmento	Elevação	Подъем
Distribution	Katzfahren	Trolleying	Distribución	Distribuzione	Distribuição	Перемещение каретки
Orientation	Schwenken	Slewing	Orientación	Rotazione	Rotação	Поворот
Translation	Kranfahren	Travelling	Traslación	Traslazione	Translação	Перемещение крана



* Document commercial non contractuel. Pour toute information technique se référer à la notice correspondante.

* Unverbindliches Vertriebsdokument. Für technische Informationen, siehe die entsprechenden Anweisungen.

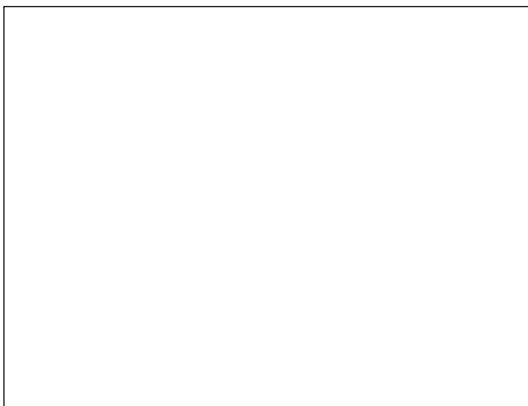
* This commercial document is not legally binding. For any technical information, please refer to the corresponding instructions.

* Documento comercial no contractual. Para cualquier información técnica, ver la noticia correspondiente.

* Documento commerciale non vincolante, per tutte le informazioni tecniche fare riferimento al catalogo istruzioni.

* Documento comercial não contratual. Para qualquer informação técnica complementar consultar as respectivas instruções.

* Этот коммерческий документ не является юридически обязательным. Для получения технической информации, см. соответствующие инструкции.



MD 3200



Manitowoc - Americas - World Headquarters
2400 S. 44th Street • Manitowoc • WI 54220 USA
Tel: +1 920 684 4410 • Fax: +1 920 652 9778

Manitowoc - Europe, Middle East & Africa
Ecully, France
18, rue de Charbonnières B.P. 173 • 69132 ECULLY Cedex • FRANCE
Tel: +33 (0)4 72 18 20 20 • Fax: +33 (0)4 72 18 20 00

Manitowoc - Asia Pacific
16F Xu Hui Yuan Building,
1089 Zhongshan No.2 Road (S) • Shanghai 200030 China
Tel: +86 21 6457 0066 • Fax: +86 21 6457 4955

REF. 2004 52 MCK 6